

ORSY BULL-Boxes SERIES



Top Loader

Art. No. 0962 330 001

P. Qty.: 1

Art. No. 0962 330 011*

P. Qty.: 1



External dimensions in mm (W x D x H)	592 x 390 x 203
Internal dimensions in mm (W x D x H)	495 x 334 x 147
Volume in litres	28
Empty weight in kg	5.25



Top Loader

Art. No. 0962 330 002

P. Qty.: 1

Art. No. 0962 330 012*

P. Qty.: 1



External dimensions in mm (W x D x H)	592 x 390 x 400
Internal dimensions in mm (W x D x H)	495 x 334 x 343
Volume in litres	67
Empty weight in kg	7.0

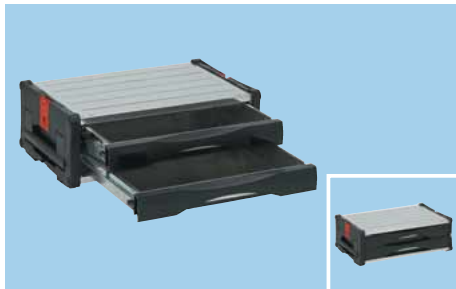


Front Loader

Art. No. 0962 330 022

P. Qty.: 1

External dimensions in mm (W x D x H)	592 x 390 x 400
Internal dimensions in mm (W x D x H)	495 x 334 x 343
Volume in litres	67
Empty weight in kg	7.0



Drawer Box

Art. No. 0962 330 041

P. Qty.: 1

External dimensions in mm (W x D x H)	592 x 390 x 203
Internal dimensions in mm (W x D x H)	-
Volume in litres	20
Empty weight in kg	8.7
Number of drawers / Internal dimensions in mm (W x D x H)	2 / 480 x 335 x 62



Drawer Box

Art. No. 0962 330 042

P. Qty.: 1

External dimensions in mm (W x D x H)	592 x 390 x 400
Internal dimensions in mm (W x D x H)	-
Volume in litres	50
Empty weight in kg	15.75
Number of drawers / Internal dimensions in mm (W x D x H)	5 / 480 x 335 x 62



Drawer Box

Art. No. 0962 330 043

P. Qty.: 1

External dimensions in mm (W x D x H)	592 x 390 x 400
Internal dimensions in mm (W x D x H)	-
Volume in litres	50
Empty weight in kg	12.8
Number of drawers / Internal dimensions in mm (W x D x H)	1 / 480 x 335 x 62 2 / 480 x 335 x 125

Each drawer box is equipped with a lock for all drawers and is supplied with two keys.

The 480 x 335 x 62 mm drawers are also suitable for storing the TOOL system tool assortment.

* IP54 = dust and splash-water protected